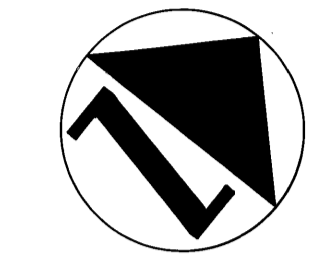


PLAT NO. 2 SAILFISH POINT P.U.D.

LYING IN PART OF FRACTIONAL SECTION 8,
TOWNSHIP 38 SOUTH,
RANGE 42 EAST,
MARTIN COUNTY, FLORIDA.

OCTOBER 1980

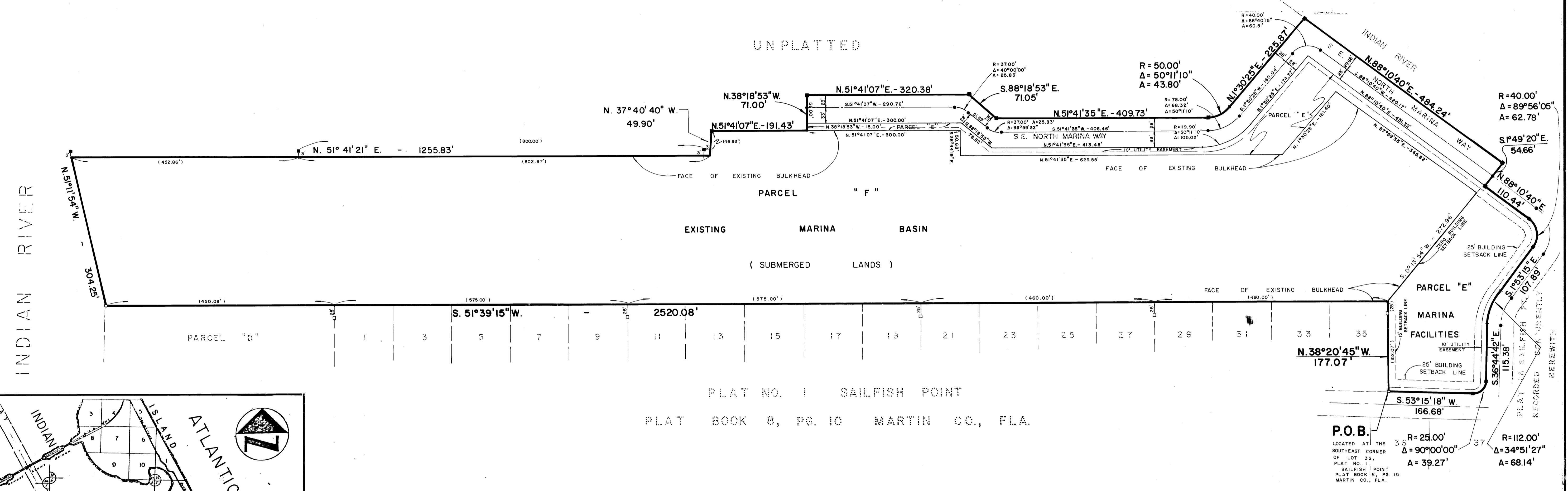


I, LOUISE V. ISAACS,
CLERK OF THE CIRCUIT
COURT OF MARTIN COUNTY,
FLORIDA, HEREBY CERTIFY
THAT THIS PLAT WAS FILED
FOR RECORD IN PLAT BOOK
8 PAGE 48 MARTIN
COUNTY, FLORIDA, PUBLIC
RECORDS, THIS DAY
OF _____, 1980.

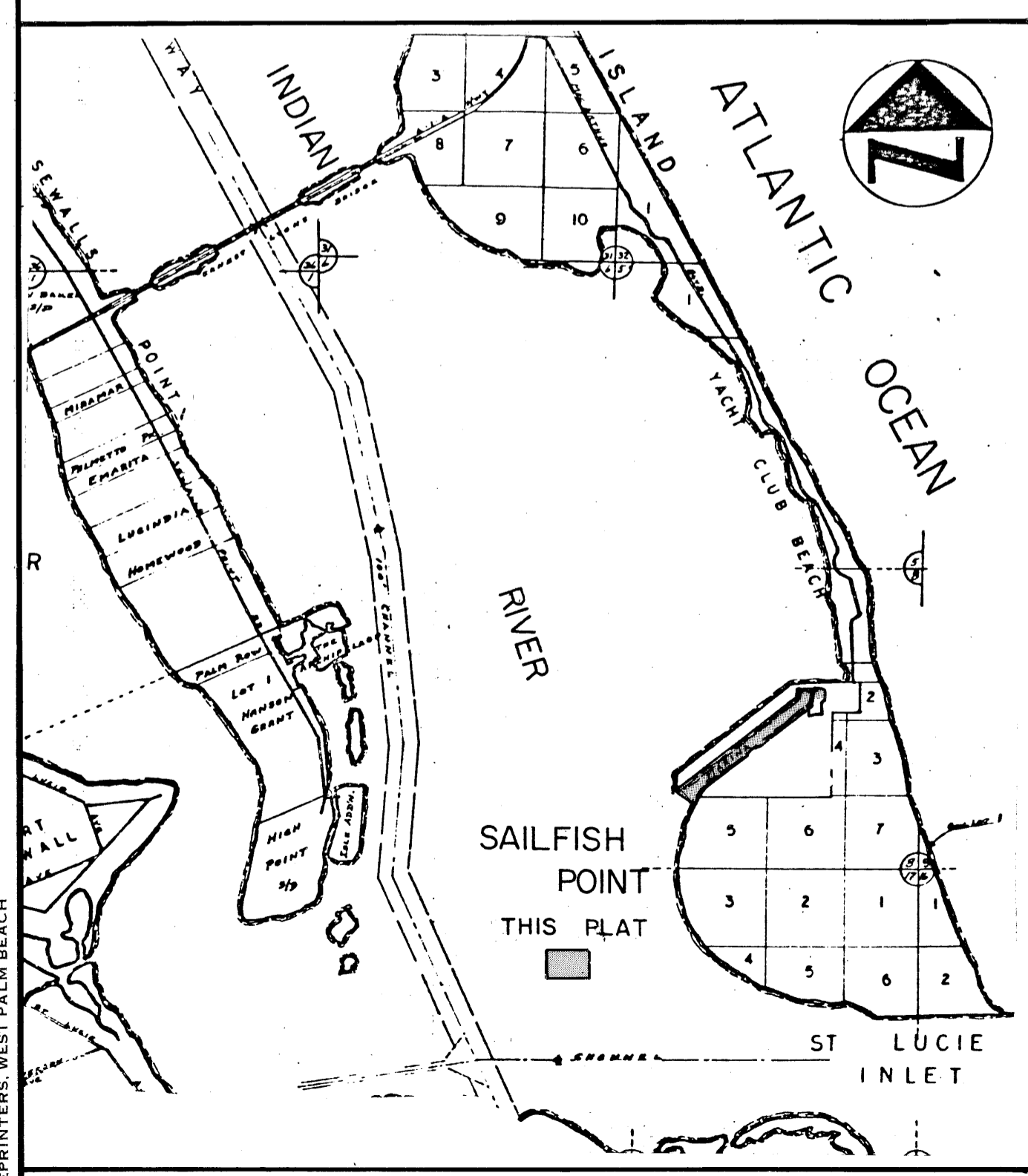
LOUISE V. ISAACS, CLERK
CIRCUIT COURT
MARTIN COUNTY, FLORIDA

BY: _____

FILE NO. _____



PLAT NO. 1 SAILFISH POINT
PLAT BOOK 8, PG. 10 MARTIN CO., FLA.



VICINITY SKETCH n.t.s.

NOTE - PARCEL "F" IS COMPRISED OF SUBMERGED LANDS. SAID PARCEL "F" BEING MORE PARTICULARLY DESCRIBED AS FOLLOWS:

FROM THE SOUTHEAST CORNER OF LOT 35 OF PLAT NO. 1, SAILFISH POINT, P.U.D., AS RECORDED IN PLAT BOOK 8, PAGE 10 RECORDS OF MARTIN COUNTY FLORIDA, RUN N 38°20'45" W, ALONG THE EAST LINE OF SAID LOT 35, A DISTANCE OF 177.07 FEET, TO THE POINT OF BEGINNING; THENCE RUN S 51°39'15" W, ALONG THE NORTHWEST LINE OF SAID PLAT NO. 1, A DISTANCE OF 2520.08 FEET; THENCE N 51°11'54" W, A DISTANCE OF 304.25 FEET; THENCE N 51°41'21" E, A DISTANCE OF 1255.83 FEET; THENCE N 37°40'40" W, A DISTANCE OF 49.90 FEET; THENCE N 51°41'07" E, A DISTANCE OF 491.43 FEET; THENCE S 36°44'19" E, A DISTANCE OF 50.68 FEET; THENCE N 51°41'35" E, A DISTANCE OF 629.55 FEET; THENCE N 1°30'25" E, A DISTANCE OF 161.40 FEET; THENCE N 8°59'35" E, A DISTANCE OF 345.82 FEET; THENCE S 0°13'54" W, A DISTANCE OF 272.96 FEET TO THE POINT OF BEGINNING.

- SURVEYOR'S NOTES:**
- MONUMENTATION:
- DENOTES PERMANENT REFERENCE MONUMENT (P.R.M.)
 - DENOTES PREVIOUSLY PLACED P.R.M.
 - DENOTES PERMANENT CONTROL POINT (P.C.P.)
 - DENOTES PREVIOUSLY PLACED P.C.P.

BEARING BASE
ALL BEARINGS SHOWN HEREON ARE RELATIVE TO THE BEARINGS SHOWN ON PLAT NO. 1, SAILFISH POINT PLAT BOOK 8, PAGE 10.

LINDAHL, BROWNING & FERRARI, INC. Consulting Engineers, Planners & Surveyors		2	2
426 INDIANTOWN ROAD JUPITER, FLORIDA 33458	951 COLORADO AVENUE STUART, FLORIDA 33494		